



# Golden Lift Chairs

AMERICA'S #1 SELLING BRAND

**SUMMER 2015**



Visit Your Authorized Golden Dealer:

*Our American made lift chairs come in every shape and size for the perfect fit. Our premium fabrics match nearly every décor, and our patented technologies give you the most comfortable lift and recline experience.*





# MAXICOMFORT® SERIES

(maximum comfort)

MaxiComfort® chairs are the most advanced lift and recline chairs anywhere in the world! In MaxiComfort, your body is transported into a blissful, relaxed state. Choose from optimal comfort positions that promote health, wellness, and relaxation for both your body and your mind.



## MaxiComfort Positioning

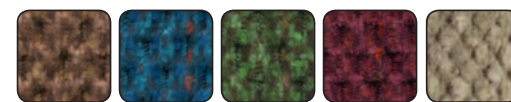


Lift Watch TV Total Comfort Zero-gravity Trendelenburg



**W**  
= pocketed coil spring seat std.

## MAXICOMFORTER FABRICS



**W** Quick Ship Fabrics for PR-505S, PR-505M & PR-505L: Palomino, Admiral, Cabernet  
Quick Ship Fabrics for PR-505JPT: Pearl



## GOLDEN AutoDrive™ 3.0 CUSTOMIZED COMFORT

Travel effortlessly and smoothly through your favorite positions. Using pre-programmed and programmable buttons, you can lift, recline, watch TV, sleep, or enjoy the wellness benefits of the zero-gravity and Trendelenburg positions, all at the touch of the AutoDrive™ buttons.



**MaxiComforter Jr. Petite**  
PR-505JP shown in Evergreen



**MaxiComforter Small**  
PR-505S shown in Palomino



**MaxiComforter Medium**  
PR-505M shown in Admiral



**MaxiComforter Large**  
PR-505L shown in Cabernet

**W** Additional Quick Ship Fabrics for PR-505M: Pearl, Brisa® Buckskin & Coffee Bean (upcharge applies).

When you sit in the Cloud, you feel cushion and support from every angle. Get surrounded with first class comfort in hybrid sizing lift chairs! The Cloud SME comes in small/medium for people 5'1" to 5'6" and the Cloud MLA fits people 5'7" to 6'4".

## CLOUD FABRICS



\*upcharge applies



**MaxiComfort Cloud**  
PR-510-MLA shown in Hazelnut



**MaxiComfort Cloud SME**  
PR-510-SME shown in Calypso

**W** Quick Ship Fabrics for PR-510-SME Hazelnut, Sterling, Copper



**Cirrus**  
PR-508M shown in Pearl

**W** Quick Ship Fabrics for PR-508M: Palomino, Admiral, Pearl, and Brisa® Buckskin (upcharge applies).

## CIRRUS FABRICS



\*upcharge applies

## RELAXER FABRICS



\*upcharge applies



**Relaxer**  
PR-756MC shown in Sterling

**W** Quick Ship Fabrics for PR-756-MC & PR-756L: Hazelnut, Sterling & Copper.  
Additional Quick Ship Fabrics for PR-756-MC: Brisa® Buckskin & Coffee Bean (upcharge applies).



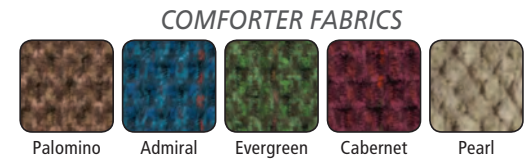
**Relaxer**  
PR-756L shown in Copper





## COMFORTER SERIES (a perfect fit)

The Comforter series fits people who are 5'0" to 6'8" tall with weight capacities from 300 to 375 lbs. These chairs give the perfect sizes for the perfect fit.



**COMFORTER FABRICS**  
Palomino Admiral Evergreen Cabernet Pearl  
Quick Ship Fabrics for PR-501S, PR-501M and PR-501L: Palomino, Admiral, & Cabernet.



### Jr. Petite

PR-501JP shown in Admiral  
For heights 5'0" and under

Quick Ship Fabrics for PR-501JPT: Pearl.



### Small

PR-501S shown in Pearl  
For heights 5'0" to 5'3"



### Medium

PR-501M shown in Palomino  
For heights 5'4" to 5'10"

Quick Ship Fabrics for PR-501M: Pearl.



### Large

PR-501L shown in Evergreen  
For heights 5'11" to 6'2"



### Tall

PR-501T shown in Cabernet  
For heights 6'3" to 6'8"

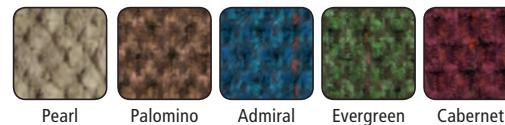
Quick Ship Fabrics for PR-501T: Palomino.



## COMFORTER WIDES

The Comforter Wides are perfect for those who need more space between the armrests. Constructed using the highest quality components for reliable, steady lifting and reclining, these chairs offer weight capacities from 375 to 700 lbs.

### COMFORTER WIDE FABRICS



Quick Ship Fabrics for 501M26D & PR-502: Palomino



### Small 23

PR-501S-23 shown in Cabernet  
For heights 5'0" to 5'3"



### Medium 26

PR-501M-26 shown in Pearl  
For heights 5'4" to 5'10"  
(Dual Motor)



### Large 26

PR-501L-26 shown in Evergreen  
For heights 5'11" to 6'2"  
(Dual Motor)



### Tall 28

PR-501T-28 shown in Admiral  
For heights 6'3" to 6'8"  
(Dual Motor)



### Super 33

PR-502 shown in Palomino  
(Triple Motor)



## VALUE SERIES (cost-effective)

This series combines ultra-soft lumbar pillow support with our unique "grip-rite" arm design for easy transfer.



**Monarch Md.**  
PR-355M shown in Autumn

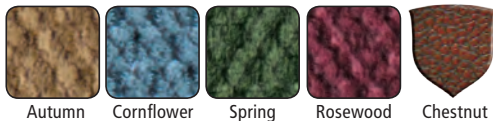


**Capri**  
PR-200 shown in Cornflower



**Monarch Lg.**  
PR-355L shown in Spring

### VALUE FABRICS



Autumn Cornflower Spring Rosewood Chestnut



Quick Ship Fabrics for PR-200, PR-355M & PR-355L:  
Autumn, Cornflower, Rosewood and Chestnut

## SIGNATURE SERIES (multi-functional)

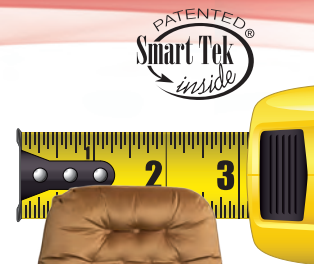
Want a little something extra from your lift chair?  
This selection has it all, and... even a little more.



**Burlington**  
PR-722 shown in Calypso  
Sink into the comfort of pocketed coil spring seats combined with our plush three-pillow waterfall back and let the stress of the day melt away.



**Regal**  
PR-751 shown in Sterling  
Ease into this luxurious 3-pillow lift chair with convenient arm storage and foldable tray.



**Savannah**  
PR-930 shown in Copper

Thanks to our unique frame design, the Savannah can be placed only 3" from the wall and still recline to the full napper position!

### SIGNATURE FABRICS



Hazelnut Sterling Copper Calypso Shiraz



Quick Ship Fabrics for PR-751TY, PR-722, PR-724 & PR-451: Hazelnut  
Quick Ship Fabrics for PR-930: Copper  
Quick Ship Fabrics for PR-751TY: Sterling & Copper



### Shiatsu

PR-724 shown in Sterling

Relax and enjoy the rotating massage mechanism of the Shiatsu lift and recline chair.

## TRADITIONAL SERIES (universal designs)

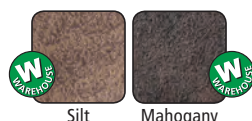
The Traditional series is all about looks. Choose from colonial or overstuffed biscuit back classics.



**Oxford**  
PR-710 shown in Silt

The classic "club chair" design with a lift! Perfect as a second lift chair in your home, ideal for a bedroom or den, the Oxford features a pocketed coil spring seat and designer nail heads in front of the armrests.

### OXFORD FABRICS



Silt Mahogany



= pocketed coil spring seat std.



**Cambridge**  
PR-401SME  
shown in Sterling



**Cambridge**  
PR-401MLA  
shown in Hazelnut

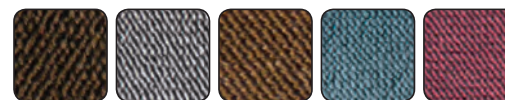


**Williamsburg**  
PR-747  
shown in Shiraz



Quick Ship Fabrics for PR-401-SME & 401-MLA:  
Hazelnut, Sterling, Copper

### CAMBRIDGE & WILLIAMSBURG FABRICS



Hazelnut Sterling Copper Calypso Shiraz



### Transfer Chair

PR-451 shown in Hazelnut

Unique flip-up arm design allows for easy transfer into and out of a power chair.



Golden Technologies is the world's leading manufacturer of lift and recline chairs. Founded in 1985, Golden has become America's most trusted and reliable brand. Our lift chairs are hand assembled in the United States and built using only the highest quality materials.



**PRODUCT SPECIFICATIONS**

	Model	Weight Capacity	Overall Width	Overall Height	Seat to Top of Back	Width Between Arms	Seat Depth	Floor to Top of Seat	Extension - While Reclined from Back of Seat to End of Footrest	Floor to Top of Footrest - Reclined	Heat & Massage Option Available	Footrest Extension Option Available	Straight Lift Option Available*	
Traditional	Cambridge	PR-401-SME	375 lbs.	33"	41.5"	27"	20"	19"	19"	41.5"	22"	Yes	Yes	Yes
	Cambridge	PR-401-MLA	375 lbs.	35"	44.5"	31"	22"	22"	22"	44"	23"	Yes	Yes	Yes
	Williamsburg	PR-747	375 lbs.	32.5"	44"	28"	21"	21.5"	19.5"	42"	23"	Yes	Yes	Yes
	Oxford	PR-710	375 lbs.	38.5"	41"	27"	22"	19.5"	20.5"	43"	22.5"	No	No	Yes
Signature	Regal	PR-751TY	375 lbs.	36"	44"	28"	22"	21.5"	20"	42"	24"	Yes	No	Yes
	Burlington	PR-722	375 lbs.	32.5"	43"	28"	21"	20.5"	20.5"	42.5"	23"	Yes	Yes	Yes
	Shiatsu	PR-724	375 lbs.	32.5"	44"	29"	21"	21"	20"	42"	22.5"	No	No	Yes
	Transfer	PR-451	375 lbs.	33"	42.5"	29"	20"	20"	19"	40.5"	23"	Yes	Yes	Std.
	Savannah	PR-930	350 lbs.	33"	39"	24.5"	17"	18.5"	19"	39.5"	19.5"	No	No	No
MaxiComfort®	Cloud SME	PR-510-SME	375 lbs.	33.5"	41"	27"	18.5"	19.5"	19"	43"	23"	Yes	No	No
	Cloud MLA	PR-510-MLA	375 lbs.	38"	45"	29"	20"	21.5"	20"	44"	24.5"	Yes	No	No
	Relaxer	PR-756MC	375 lbs.	36.5"	44"	29"	20"	21"	19"	43"	23"	Yes	Yes	No
	Relaxer	PR-756L	375 lbs.	39"	46"	30"	22"	22"	20.5"	44"	24"	Yes	Yes	No
	Cirrus	PR-508M	375 lbs.	32"	43"	29"	20"	20"	20.5"	42"	23"	Yes	Yes	No
	Comforter JP	PR-505JP	300 lbs.	30.5"	39"	22.5"	19"	18.5"	18"	38"	22"	Yes	Yes	No
	Comforter Sm.	PR-505S	300 lbs.	31.5"	40"	25"	20"	19.5"	19"	39"	23"	Yes	Yes	No
	Comforter Md.	PR-505M	375 lbs.	32.5"	42"	27"	21"	21"	19.5"	42"	23"	Yes	Yes	No
Comforter Lg.	PR-505L	375 lbs.	34.5"	44"	28.5"	23"	22"	20.5"	43"	23"	Yes	Yes	No	
Comforter	Junior Petite	PR-501JP	300 lbs.	30.5"	39"	25"	19"	18.5"	18"	38"	22"	Yes	No	Yes
	Small	PR-501S	300 lbs.	31.5"	40"	25"	20"	19.5"	19"	39"	23"	Yes	Yes	Yes
	Medium	PR-501M	375 lbs.	32.5"	42"	27"	21"	21"	19.5"	42"	23"	Yes	Yes	Yes
	Large	PR-501L	375 lbs.	34.5"	44"	28.5"	23"	22"	20.5"	43"	23"	Yes	Yes	Yes
	Tall	PR-501T	375 lbs.	34.5"	47"	30"	23"	24"	22.5"	45"	23"	Yes	Yes	Yes
Comforter Wides	Small X-wide	PR-501S-23	375 lbs.	34.5"	40"	25"	23"	19.5"	18"	39"	23"	Yes	Yes	Yes*
	Medium-26 Dbl.	PR-501M-26D	500 lbs.	38.5"	42"	27"	27.5"	21.5"	19.5"	42"	23"	Yes	Yes	Yes*
	Large-26 Dbl.	PR-501L-26D	500 lbs.	38.5"	44"	28.5"	27.5"	22.5"	20.5"	43"	23"	Yes	Yes	Yes*
	Tall-28 Dbl.	PR-501T-28D	500 lbs.	41"	48"	30"	29.5"	24"	22.5"	45"	23"	Yes	Yes	Yes*
Value	Capri	PR-200	325 lbs.	31"	41"	27"	20"	19"	18"	40"	23"	No	No	Yes
	Monarch Md.	PR-355M	375 lbs.	32"	42"	28"	21"	20.5"	18.5"	43"	23"	Yes	No	Yes
	Monarch Lg.	PR-355L	375 lbs.	34"	44"	30"	23"	21.5"	19.5"	43"	22"	Yes	No	Yes

\*Must be set at factory.



**SoftTouch**  
with STAIN DEFENSE

Admiral Evergreen  
Cabernet Palomino Copper Hazelnut  
Sterling Autumn Cornflower Spring  
Rosewood Pearl Calypso Shiraz

**CUSTOM FABRICS**

**Brisa®**  
Black Onyx Buckskin Hollyhock Night Navy Desert Clay  
Cream Coffee Bean Saddle Salsa Bark  
Elderberry Sepia Flint

**BRISA FRESCO**  
Shamrock Eclipse Cobalt Erцу Chestnut Geranium

**PADDED SUEDE**  
Silt Mahogany

NOTE: Crossing fabrics & series is available. Charges will apply and lead times will change.

**VALOR**  
LURETHANE



Complies with UL 73 and CSA C22.2 No. 68  
Listing # E112417  
FNAE 80-214A

